



BURLEIGH GOLF CLUB

GOLD COAST • AUSTRALIA



OFFICIAL CLUB BROCHURE
2015 - 2016

Where have you teed off lately?

To start planning your next golf holiday contact Nathan Dare
on 1800 242 613 or email nathan_dare@travel-associates.com.au
travel-associates.com.au/dare

*Flight Centre Travel Group Limited (ABN 25 003 377 188) trading as Travel Associates. ATAS Accreditation No: A10412. TAADV63557

DARE & TURNER
TRAVEL
ASSOCIATES

Our experience counts.



PREMIER PUBLISHING
Level 10, 555 Lonsdale St
Melbourne VIC 3000
T 03 9521 7994
E info@premierpublishing.com.au
W www.premierpublishing.com.au

Burleigh Golf Club and Premier wish to thank the advertisers who appear in this publication for their support and wish them every business success. The contents of this brochure are believed to be correct at the time of printing, nevertheless, we cannot endorse and readers should not rely solely upon the accuracy of any statements or claims contained herein without prior consultation with the service provider.
Photography by: **Shree Vella Photography** | 0416 265 804 | www.shreevella.com

CONTENTS

Welcome	5	Benefits of Membership	13	Social and Corporate Golf Days...	23
A Brief History	6	Members' Golf	17	Weddings, Functions and	
The Course	9	Reciprocal Golf	18	Conferences.....	25
Pro Shop.....	10	Juniors	19	Clubhouse and Brasserie	26
Game Improvement	10	Beginner Golf Clinics.....	21	Contact Us.....	26
How to Join.....	11	Visitors	23		



BURLEIGH GOLF CLUB



WELCOME TO BURLEIGH GOLF CLUB

Located in the heart of the Gold Coast close to Miami Beach, Burleigh Golf Club offers first class golfing and clubhouse facilities and a warm welcome to both Members and Guests.

Founded in 1950, our Club is home to a mature 18-hole championship course that is rated among the leading layouts on the Gold Coast. A qualified Teaching Professional, fully-stocked Pro Shop and fine practice facilities further enhance the golfing experience.

A variety of golfing memberships are available to suit all needs and we even offer a Social Membership which is ideal for the non-golfer wishing to enjoy our excellent facilities.

Whilst we are a traditional Members' Club with a strong membership base, we welcome social and corporate

golf day groups, who are promised a memorable experience both on and off the course.

The modern clubhouse at Burleigh is one of the finest in the region. Large windows provide a superb view of the course and there's a full à la carte menu from which to choose at the popular Gumtrees Brasserie which is open for lunch seven days a week and for dinner on Wednesday and Friday nights.

The spacious and well-appointed clubhouse offers a home away from home to our Members and provides a stunning venue for functions such as wedding receptions, birthday parties or conferences.

Come and discover everything that Burleigh has to offer. We look forward to seeing you.



A BRIEF HISTORY

The club was founded in 1950 as Burleigh Heads Golf Club by a small group of local golfing enthusiasts. They thought a golf course would be the ideal addition to a quiet seaside town at that time boasting only a bowls club and two tennis courts in terms of leisure amenities. How right they were!

A public meeting to gauge local interest was well attended and in due course the perfect location – our current site – was found.

Encouraged by the generous support of the townspeople, the Club committee arranged socials, working bees and bonfires, as they acquired fresh skills with axe, shovel, public relations, dynamite, course layout and tight fiscal management.

So it was that the assorted group of dedicated hackers – with their wives and families – transformed the bushland

to set up and begin the region's finest golf course.

In the spring of 1955 the first official game over a five-hole circuit was played on our course which by that time was also complete with a clubhouse.

Membership grew rapidly and by the following year nine holes were open for play. The second nine was opened in October 1960. Foundation member Bill Patterson, armed only with a book on course construction from the USA and his own initiative, was responsible for designing the wonderful back nine that is still enjoyed today.

The recent construction of a new clubhouse and many other improvements, such as the installation of a new irrigation system, underlines the Club's ongoing commitment to continually strive to provide the best for its Members.



MISSED THE HOLE?

Should've gone to Specsavers

West Burleigh:
Stockland Burleigh Heads
(Near Big W)
5535 6131

SUNSHINEFORD.COM.AU

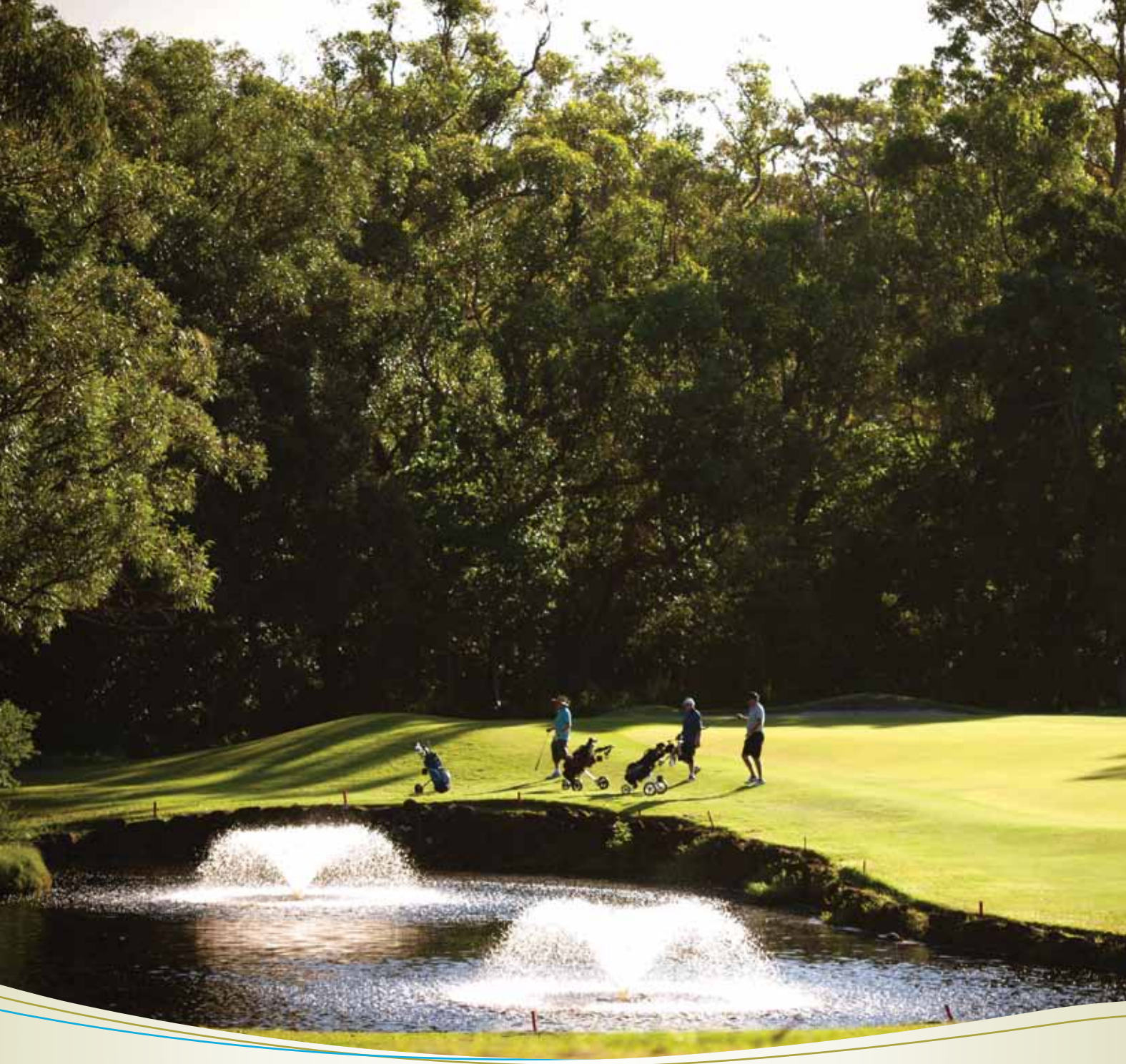


NEW FORD SERVICE LOCATION NOW OPEN
74 Kortum Drive, Burleigh Heads, QLD, 4220

PHONE: (07) 5582 7777



FORD SALES, PARTS & SERVICE
292 Nerang Road, Southport, QLD, 4215



THE COURSE

Any club is only as good as its course and Burleigh is fortunate that it has a real gem that will delight everyone from the experienced golf professional to the casual player.

The 18-hole layout measures 5,935 metres from the men's black tees. It plays as a par-71, the outward nine featuring two par-5s and three par-3s, with two par-5s and two par-3s coming home. The ladies enjoy an equally invigorating test, featuring a 5,342-metre par-73 layout.

With two distinct nines – 'woodland' and 'sandbelt' – all the holes are appreciably different and offer their own unique challenge.

The course invariably looks a picture, the immaculate presentation down to a combination of the availability of a recycled water supply, the use of state-of-the-art course machinery and turf management techniques and the painstaking work of the Course Superintendent and his dedicated team of greenkeeping staff.

It is perhaps not as long as some of the modern-day monsters, but that does not make it a pushover. Far from it.

The tree-lined fairways on many holes means that anything off line from the tee will be punished, with the wayward golfer often having to chip out sideways and take their medicine rather than risk trying a heroic shot to advance the ball towards the green. Playing to your handicap is a challenge but an achievable one if you keep your ball in play.

Long and challenging par-4s into the wind, gentle dog legs allowing the better player to show their ability to work the ball, undulating lies, water hazards, and strategically-placed bunkers, this layout has it all.

First-time visitors often remark about the evenly-paced and true-rolling nature of the greens, which are a delight to putt on.

PRO SHOP

The friendly team in the Pro Shop are on hand seven days a week to help golfers enjoy their game to the full.

With knowledgeable, friendly and helpful staff, Members and visitors are offered a personable service at an unbeatable price, with Members benefitting from discounts on all clubs, bags, footwear and clothing.

Customers receive the highest level of professional advice featuring the very latest technology. Custom fitting featuring the state-of-the-art Flightscope launch monitor ensures golfers can benefit from a made-to-measure set of clubs that are perfectly suited to their unique game.

There is a wide selection of equipment in stock from many of the leading manufacturers. Prices are competitive and specific brands or models of club

can be sourced on request if they are not immediately available.

The Pro Shop offers a wide range of products which include clubs, balls, clothing, shoes, gloves, trolleys, bags and much more, in fact just about everything needed to enjoy a day out on the course.

A fantastic range of men's and ladies' clothing for all seasons is also in stock so golfers can look the part on the course.

Good quality sets of clubs are available for hire, as are carts and pull trolleys for those wishing to save their energy for their golf.

Whatever your needs, they will be happy to help. Call the Pro Shop on **(07) 5572 8972** or email:

proshop@burleighgolfclub.com.au



GAME IMPROVEMENT

The Burleigh Head Professional is available by appointment to help you get the most from your game and maximise your enjoyment out on the course.

Lessons are available to improve every area of a golfer's game, helping players of all abilities eliminate their weaknesses and turn them into strengths.

Our philosophy is golf is a game of "simple things done often". We work with the golfer's current technique and physical capabilities to refine and improve their game through the use of simple core fundamentals.

Individual lessons of 30, 45 or 60 minutes are available covering all areas of the game, from driving and long game through to chipping and putting. There are also

a selection of game improvement packages available that can include a swing assessment on the Flightscope Launch Monitor and an on-course playing lesson.

Lessons are so much more beneficial with accompanying practice facilities on hand to enable the golfer to ingrain new swing thoughts or techniques into their repertoire quickly and easily.

Burleigh has some outstanding practice facilities which include driving range, putting and chipping greens, bunker area and driving nets.

Get your game in shape by booking a lesson through the Pro Shop. Call **(07) 5572 8972**.

HOW TO JOIN

There is no better way to enjoy the benefits of one of the leading courses on the Gold Coast than by becoming a member here at Burleigh.

The membership year begins on July 1, but new Members can join at any time of year, paying a pro rata subscription in their first year. Presently there is no joining fee.

There are a number of membership categories from which to choose. By far the most popular is the traditional seven-day golf membership giving unlimited access to the magnificent 18-hole course and a host of competitive playing opportunities.

A Limited (Pay to Play) membership option offers a seven-day membership with a green fee payable at a reduced rate for each round played. This represents an excellent option for either the occasional player or the golfer wishing to experience everything Burleigh has to

offer before deciding to commit to full membership and even permits those with an approved handicap to play in all club competitions.

Juniors under the age of 18 benefit from special membership rates and there are also memberships offering attractive rates for young adults up to the age of 24.

Not a golfer? No problem, a Social Membership allows use of the clubhouse facilities only. With a great atmosphere and a wonderful location, Burleigh Golf Club is a spectacular place to bring friends.

The latest membership categories and fees can be viewed on the Club website,

www.burleighgolfclub.com.au, which also has an application form available to download. For more information, please call **(07) 5572 8266** or pop into the Club.

Gerber Dental Groupwhen quality matters

www.gerberdentalgroup.com.au

cosmetic smile makeovers • dental implants • veneers • laser dentistry • cerec • digital x-ray & i-CAT scanning • non-extraction orthodontics
TMJ pain management • emergency and family dentistry • oral surgery • bad breath elimination • tooth whitening • vet affairs & medicare



HCF



gem

medibank
PRIVATE



Burleigh Heads 07 5576 4923



BENEFITS OF MEMBERSHIP

Golf Membership at Burleigh Golf Club has much to recommend it. Here is just a selection of the many benefits enjoyed by our members:

- 18-hole Championship golf course, par 71 for men and par 73 for women
- Full practice facilities including driving range, putting and chipping greens, bunker area and driving nets
- Experienced PGA Golf Professional for lessons, clinics, club fitting and repairs
- Fully-stocked Pro Shop with preferred member pricing on equipment, apparel and accessories
- Full hire facilities of clubs, motorised golf carts and pull buggies
- Club storage facilities are available for an annual fee
- Preferred access and reduced rates at a growing number of mutual membership clubs in Queensland and interstate

- Full bar and dining facilities with stunning views of the golf course
- Gumtrees Brasserie for dining and functions. Gumtrees is open for lunch seven days and evening dining on Wednesdays and Fridays.
- Members enjoy preferred pricing on beverages at the bar upon presentation of their membership card
- Happy Hour Member prices
- Gaming facilities including Keno and Pokies
- Free weekly trivia evenings every Wednesday from 7pm
- Private Members' Locker Rooms where lockers may be rented for an annual fee
- Weekly e-news, with details of special events and promotions within the Club
- Fully equipped Board Room available for hire on half day or full day basis

5 REASONS TO JOIN BURLEIGH GOLF CLUB

- 1 The best club course on the Gold Coast
- 2 Traditional golf club hospitality and welcome membership
- 3 Multiple membership categories and payment options

- 4 Local to accommodation, located in the heart of the Gold Coast
- 5 Member's preferred pricing at the Bar, Pro Shop and Restaurant

COASTWIDE
Solar

Your Local Solar Experts

- Grid Connect Systems
- Hybrid / Battery Systems
- Upgrades / Maintenance
- Professional Service
- Quality Guaranteed

PH: 5520 0034

www.CoastwideSolar.com.au

**Beat Rising
Power Bills**

**Go Solar
Today!**



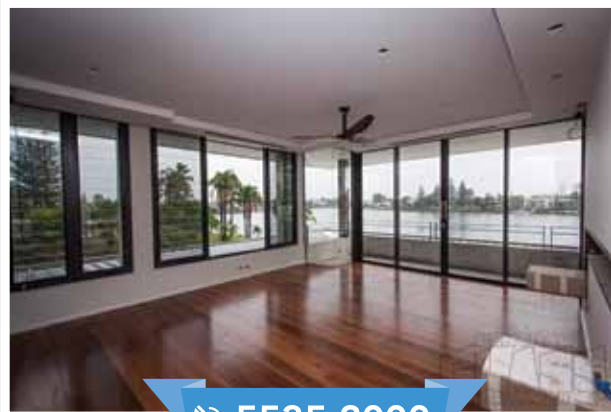
Showroom - 10 / 2 Prosper Crescent Burleigh Heads



BURLEIGH GOLF CLUB



CENTRAL GLASS AND ALUMINIUM



5535 2000

Central Glass and Aluminium are Gold Coast glaziers who repair, install, design, maintain and manufacture all of your commercial and domestic glass and aluminium needs.

You dream it - We make it!

We are a customer-focused, family-owned company who take personal pride in supplying a complete glazing and aluminum service in the home, the factory or wherever you need an expertly fitted pane of glass.



16a Hibiscus Haven, Miami, QLD, Australia 4220
management@centralglass.net.au
www.centralglass.net.au

MTS

MERMAID TAXATION SERVICES

Accountants · Tax Agents · Business Advisors



Mermaid Taxation Services is your locally owned and operated accounting and taxation specialist.

We have years of industry experience in accounting and taxation. We provide friendly, professional and reliable services. Call Glen today to discuss your individual requirements.

OUR SERVICES INCLUDE:

- Taxation & Accounting Services
- BAS Preparation
- GST Advice
- Budgets
- Cash flows
- Finance application assistance
- Business Improvement

We are able to provide these services to individuals, partnerships, trusts, companies and superannuation funds.

**CALL US TODAY FOR
EXPERT ADVICE
AND FRIENDLY SERVICE.**

5575 2233

17-19 Oak Ave, Miami QLD 4220 Registered Tax Agent



MEMBERS' GOLF

Members at Burleigh enjoy a range of competitive golf throughout the season, both within the Club for trophies and in interclub events such as the annual Gold Coast pennants.

Both our men and women enter several teams in pennant play each year, which offers the thrill of representing the Club in a team environment and the opportunity to play on some of the other leading courses in the region.

While there are some seriously good players in the top divisions, you don't have to be a scratch golfer to experience the thrill of pennant play. Burleigh also enters teams in other divisions which are specifically for players with higher handicaps.

Age is no barrier to good golf. For men aged 50 and over there is the Seniors Pennant, and for the over-60s the Super Seniors Pennant. Competition is no less intense, with perhaps a little distance sacrificed off the tee by the veterans compensated for by the invaluable experience gained over the years!

Within the club, there are many trophies to be won, with some enjoying rich histories. The Mr Penfold Trophy, for instance, dates all the way back to 1961.

Members can enjoy a calendar packed with competitions throughout the season, ranging from serious and prestigious events such as the Club Championships, right through to much more relaxed social play where the overriding aim is simply enjoying golf in good company.



RECIPROCAL GOLF

Burleigh Golf Club has reciprocal relationships with a number of other golf clubs in Australia and New Zealand. These provide added value to memberships and allow Members to enjoy golf on other fine courses at discounted rates while away from home for business or pleasure.

It is recommended that Members check with the office prior to visiting a reciprocal club in relation to any special arrangements and regarding details of current participating clubs as the list is regularly updated.

Clubs with which Burleigh enjoys full reciprocal rights are:

Remuera Golf Club, Auckland, New Zealand

Royal Hobart Golf Club, Tasmania

Clubs with which Burleigh enjoys semi-reciprocal rights are:

VICTORIA

Cranbourne Golf Club

Mornington Golf Club

Northern Golf Club, Glenroy

Patterson River Country Club, Bonbeach

Peninsula-Kingswood Country Golf Club,
Frankston & Dingley Village

Rossdale Golf Club, Melbourne

QUEENSLAND

Caloundra Golf Club

Mackay Golf Club

Rockhampton Golf Club

Surfers Paradise Golf Club

Townsville Golf Club

NEW SOUTH WALES

Coolangatta-Tweed Heads Golf Club

Pymble Golf Club, St Ives

Wakehurst Golf Club, Seaforth

SOUTH AUSTRALIA

Blackwood Golf Club, Adelaide

Tee Tree Gully Golf Club

West Lakes Golf Club

WESTERN AUSTRALIA

Bunbury Golf Club

Royal Fremantle Golf Club

NEW ZEALAND

Mangawhai Golf Club, Mangawhai Heads



JUNIORS

Burleigh Golf Club prides itself on being a family club and is a great place for juniors to learn to play the game.

We are committed to turning hopeful young golfers into the best players they can possibly be, offering a safe and supportive environment in which to develop.

The club's Teaching Professionals give great encouragement to the juniors and hold a number of clinics and junior programs throughout the year, particularly during the school holidays.

There's no classroom time here, it's all about participation and juniors are encouraged to get out on the course whenever possible, with a structured program in place enabling kids to learn at their own pace.

Support is given to players of all abilities and every encouragement given for the high fliers to realise their golfing dreams. At all levels, the emphasis is on enjoyment and having fun.

For those showing an aptitude for the game, there is the opportunity to progress to represent the Club in pennant competition, with Burleigh fielding two teams in district interclub junior competitions.

There are also events held at the Club specifically for young golfers, most notably the Burleigh Junior Classic, for players under the age of 18.

As well as their own competitions, lower-handicap juniors can access the Club's main Saturday competition. There is even an annual parent-child team event held every year which is a great family day.

For further information on our program please contact the Pro Shop by phone: **(07) 5572 8972** or email: **proshop@burleighgolfclub.com.au**.



Loan Market 

*We've been helping
people into homes
for two decades.*

Founded in 1995 by Sam White, Loan Market began as Ray White Financial Services, a natural extension of the Ray White real estate business.

The business rapidly grew through the 90's and by 2001 the company's loan book reached \$1 billion. In 2003, the Loan Market brand was launched and the company had over 200 brokers throughout Australia. By 2014 our brokers had secured over \$47 billion of home loans for thousands of Australians. Today, Loan Market has cemented itself as one of the largest mortgage brokers in Australia.

Over the past decade, Loan Market has expanded into New Zealand growing our network to over 1,000 brokers internationally.

Since July 2014 Loan Market has been operating as a franchise business.



Loan Market 

www.loanmarket.com.au



BEGINNER GOLF CLINICS

Burleigh Golf Club provides a fun, friendly and supportive environment for new players keen to take up the sport.

The club is committed to growing the game of golf and holds regular beginner golf clinics (Burleigh Birdies for women, Burleigh Blokes for men) throughout the year aimed at providing a basic introduction to new players and a refresher for those returning to the game.

These seven-week clinics are conducted by one of the Club's PGA-qualified Professional team and offer instruction and coaching in putting, chipping, pitching, and bunker play as well as explaining key components in the short and long games.

The sessions provide players with the chance to learn the skills required at their pace and without the pressure

of committing to full membership before they are able to comfortably playing the game proficiently. It's also much more fun learning alongside people of similar abilities and the group environment provides an invaluable support structure if you're not quite playing like Adam Scott after your first couple of lessons!

All ages and all abilities are catered for and there is no need to be a member of a golf club. It doesn't matter if you are 60 and have never picked up a club before. Male or female, young or old, you would be made most welcome at Burleigh.

For more details, call the Pro Shop on (07) 5572 8972. If there are no clinics scheduled, get a group of friends or work-mates together and we will gladly take care of the instruction.

REVOLUTION CHIROPRACTIC

Focusing On NeuroStructural Correction



REVOLUTION CHIROPRACTIC
in Miami on the Gold Coast. We guarantee that what you will find here is healthcare that **MAKES SENSE**

Traditional chiropractors focus on decreasing muscle spasm, increasing joint range of motion and temporarily reducing pain.

Rather than constantly repairing damage, at Revolution Chiropractic we have chosen to focus on correcting the “underlying foundations” so that your spine regains as much of its normal structure and function as possible.



T: 07 55354441

Shop 24a 1934 Gold Coast Hwy,
Miami, Queensland 4220

E: admin@revolutionchiropractic.com.au
www.revolutionchiropractic.com.au



Miami Beachside Holiday Apartments is a family friendly resort apartment complex, located on the Gold Coast, Qld.



Just 75 metres from beautiful Miami Surf Beach, with kids playground and full beach patrol, right on our door step!

Miami is located in a quiet area away from the hustle and bustle but still close to all the amazing attractions the Gold Coast has to offer.

Phone (07) 5575 5000 **Fax** (07) 5578 5999
15 Santa Monica Road
Miami, Gold Coast, Qld, 4220, Australia
www.miamibeachside.com.au



VISITORS

Visitors wishing to come and enjoy our wonderful golf course are made to feel most welcome here at Burleigh Golf Club.

We are a Members' Club, but that does not prevent us from offering a genuinely warm welcome to visitors, who are treated like Members for the day.

It is always advisable to phone ahead to book a tee-time or to check with the Club our competition schedule for the day.

Burleigh is a great place to visit. We have clubs for hire and all the things you need to have a good day on the greens. Electric carts and pull buggies are also available to hire and visitors are encouraged to stay on for a bite to eat and a drink in the clubhouse after their round.

All visitors must have a Golf Link number or, in the case of overseas Guests, a handicap card or proof that they are a member of a golf club needs to be provided.

Those visiting us for the first time should note that the Club has a dress code. Respect this and standard golfing etiquette such as maintaining a good pace of play and visitors will always be most welcome.

Social golf groups are made most welcome and will also find Burleigh to be an excellent choice for a memorable day of golf. To book your round, call the Golf Shop on **(07) 5572 8972**.

SOCIAL AND CORPORATE GOLF DAYS

With a superbly maintained golf course, a modern clubhouse, wonderful catering and key staff dedicated to make your day a complete success, it's no wonder Burleigh Golf Club has become such a popular destination for social and corporate golf days.

The club can offer the complete package when it comes to golf, catering and hospitality to create an event that will live long in the memory of all concerned. Fun competitions, golf clinics and everything any host would need to impress their invited clients, no stone is left unturned. All at

a price that we hope will come as a pleasant surprise.

We can help take the strain out of a golf day for corporate clients, by taking on as much of the organisation and administrative tasks – such as scoring – as the organiser wishes.

Any number of extras can be added, such as our Pro challenging your Guests to a nearest the pin on one of the Club's memorable par-3s.

The Pro Shop is the perfect place to stock up on all those competition prizes that can make any golf day memorable for the participants, while

the Club's expert caterers can meet all your needs, with anything from a delicious hot or cold food buffet to a three-course meal available.

The best times for Social Clubs is Mondays, Tuesday afternoons and Sunday mornings, though other times may be available. Competitions are held most days and Social Clubs are welcome to enter upon payment of an additional competition fee.

Please call us today on **(07) 5572 8266** to discuss your requirements.



With an eye for unique detail and creative flair,
Shree Vella will make your unforgettable day, unforgettable.

Wedding . Portrait . Family . Model

Call today to schedule your complimentary consultation.

0416 265 804 | www.shreevella.com

find us on | facebook

WEDDINGS, FUNCTIONS AND CONFERENCES

Burleigh offers the perfect venue for your special day. We're not just a golf club that also offers functions, Burleigh is a recognised, respected and highly-regarded function destination in its own right and it shows. Our modern, spacious clubhouse was designed with functions in mind and guests lucky enough to receive an invitation to a celebration or corporate event here will be hugely impressed.

Weddings, birthday, engagement, retirement or anniversary parties, club presentations or dinners and celebrations of life have all been successfully staged at Burleigh. From large banquets to smaller intimate occasions, all events are planned with the same dedication, enthusiasm and professionalism.

Catering for up to 200 guests, the function lounge offers delightful views out over the course. The beach with its golden sands and azure waters is only 1km away. It's the stuff of dreams not only for the bride and groom and wedding party, but the bridal photographer, who is provided with all the inspiration they could ever need to create an album to treasure.

When it comes to functions, the Club offers a flexible approach. Our prime aim is to ensure that any event is nothing short of a stunning success and Burleigh's Functions Coordinator and caterers work closely with event organisers to ensure the special occasion meets and exceeds expectations.

Burleigh offers a three-tier wedding package including beverage options and a comprehensive wine list at competitive prices. The Burleigh wedding experience includes:

- Personal Wedding Coordinator
- Innovative and seasonal menu selections featuring the freshest regional cuisine
- ½ hour pre-dinner canapé service
- Complimentary venue hire until midnight
- Bridal backdrop with fairy lights

- Chair covers with coloured sash of your choice
- All tables dressed with linen table cloths and napkins
- White clothed and skirted bridal table with chiffon swagging
- White skirted cake and gift table
- Table centrepieces
- Printed menus for tables
- Use of covered terrace overlooking the golf course
- Lectern and microphone
- Complimentary car parking facilities as available

Easily reached, but in a secluded location away from the hustle and bustle and constant distractions of the everyday working environment, Burleigh makes the ideal location for a business meeting. Our private Board Room can accommodate up to 30 guests and additional break out areas overlooking the course are also available. Gumtrees Brasserie caters for post conference dining or cocktail receptions, morning and afternoon teas, breakfasts and lunches.

Conference packages include:

- Private Board Room
- Whiteboard & Markers
- Large television for presentations
- Iced Water
- Catering Options to suit your seminar or meeting
- Photocopy Service
- Complimentary car parking

More detailed wedding and functions brochures outlining menu choices and current pricing can be downloaded from our website, www.burleighgolfclub.com.au. We would be delighted to discuss your needs and to provide a tour of our facilities. Simply contact our Function & Events Coordinator on **(07) 5572 8266**.



CLUBHOUSE AND BRASSERIE

The clubhouse at Burleigh offers a home away from home to Members, Guests and visitors. It is a comfortable setting in which to relax before or after a round of golf, or simply to meet up with friends for a chat over a coffee or a glass of wine.

Fully licensed, there is a good selection of draught and bottled beers available, together with a choice of fine wines and spirits and an extensive range of refreshing soft drinks.

Patrons at Burleigh never go hungry. Our restaurant, Gumtrees Brasserie, is open seven days for lunch and on Wednesday and Friday evenings for dinner. The Terrace is a delightful spot to spend time relaxing and watching the world go by.

Menus for lunch and dinner can be viewed on our website. They feature fresh local produce sourced locally.

Even if you are not a golfer, come and sample the terrific atmosphere at Burleigh. A Social Membership is available for just a few dollars and offers access to the clubhouse as well as a whole range of benefits including preferred Member pricing on beverages at the bar (upon presentation of membership card).

To make a booking at Gumtrees Brasserie, please call **(07) 5572 8266** and ask for the restaurant or email us at **office@burleighgolfclub.com.au**

CONTACT US

Burleigh Golf Club is located in the heart of the Gold Coast just a five-minute drive or short walk from Miami Beach. It is easily reached from Gold Coast and Coolangatta along the Gold Coast Highway.

We look forward to welcoming you. If you have any questions or would like further information then please do not hesitate to contact us.

Burleigh Golf Club

Cnr Albion and Bardon Avenue
Miami
Queensland 4220

Phone: (07) 5572 8266

Email:

office@burleighgolfclub.com.au

General Manager:

manager@burleighgolfclub.com.au

Website:

www.burleighgolfclub.com.au

Social Media:

Keep up to date with all the latest news at the Club by liking our Facebook page:

www.facebook.com/BurleighGolfClub





BURLEIGH GOLF CLUB

GOLD COAST • AUSTRALIA



WWW.BURLEIGHGOLFCLUB.COM.AU